

ROC-SOLID

MPPT SOLAR REGULATOR



**More power from the sun
when you need it most**

PS Series MPPT Solar Regulator

Features

- **Closed Loop Maximum Power Point Tracking (MPPT) Technology**
- **Flexible Programming Modes via On-board LCD Screen and User Interface or via our free downloadable Settings Manager PC Application**
- **Automatic Battery Management**
- **Serial Communications Link**
- **400 Days On-board Data Logging**
- **Extensive Diagnostics**
- **250W & 500W Models Available**
- **Tapered Charge Facility**
- **Battery Equalisation Function**
- **Reverse Polarity Protected**
- **Lightning Protected**



www.roc-solid.com.au



Maximum Power Extraction

The ROC-SOLID PS Series of Maximum Power Point Tracking (MPPT) regulators are designed to extract maximum possible power from your solar panels.

Up to 30% more power

The ROC-SOLID PS Series regulators will always be able to supply your batteries with more current when you need it most, during cool and cloudy periods. Solar installations are designed around the worst-case scenario.

The number of panels required in a system is dependent on the average peak sun-hours for the month with the lowest solar radiation levels.

With ROC-SOLID PS Series regulators, the solar input required is significantly less compared with a conventional regulator system, as it is able to extract the maximum power out of your solar array by use of high efficiency DC-DC conversion. Conventional regulators are not able to get as much power out when the panel is cool. At cell temperature of 25C, the PS Series can transfer up to 30% more power to your batteries than a conventional regulator.

Reduced System Costs

The ROC-SOLID PS Series Maximum Power Point Tracking (MPPT) regulators allow smaller solar panels to be used due to the increased efficiency, therefore resulting in a significant reduction in system costs.

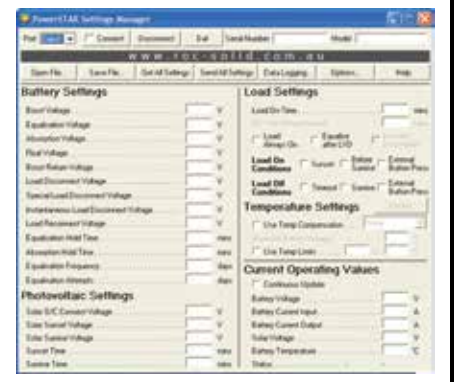
Flexible Configuration

The PowerSTAR Settings Manager application facilitates easy installation and configuration using a PC based Data Terminal, as well as the on-board user interface.

The configuration terminal supports communication with ROC-SOLID PS Series regulators via USB (PS-USB) data link, and allows all essential operating parameters to be easily entered and verified. The computer also manages the extraction and download of operational data from the inbuilt data logger.



The PowerSTAR Settings Manager application is easily downloaded from our website



Some ROC-SOLID PS Series regulators feature an on-board user interface which consists of a backlit graphical liquid crystal display and four screen navigation buttons (Enter, Cancel, Up & Down).

The 'drop down' menu structure provides an easy access to change settings, show current operating parameters and display logged information.

Technical Specification

Model	PS-2012-SL	PS-2012-BC	PS-2024-D
MPPT (Maximum Power Point Tracking)	Yes	Yes	Yes
LCD Display	No	No	Yes
Data Logging	Yes	Yes	Yes
Battery Voltage	12V	12V	12V/24V Configurable
Maximum Solar Current	20 Amp	20 Amp	20 Amp
Load Control Capability	Yes	No	Yes
Maximum Load Current	10 Amp	na	20 Amp
Tapered charge facility	Yes	Yes	Yes
Battery equalise function	Yes	Yes	Yes
Low voltage cut out voltage	User selectable	na	User selectable
Temperature compensation	-3mV/degrees C/cell		
Dimensions	145 x 80 x 27mm		200 x 100 x 92mm
Ambient Temperature	-10C to 60C		
Solar Panel Voc Max	26V		60V
Street Light Ready	Yes	No	Yes

The ROC SOLID SC Series Solar Controllers are an alternative affordable entry level range of products which uses a microprocessor to provide SOC (State Of Charge) management functions. This in turn controls the charge current to the battery using PWM technology and controls the supply of power to the load(s) according to the voltage and capacity of the battery.

For further information contact

PowerSTAR PS Series Accessories:

- PS-USB – PowerSTAR USB Communications Adaptor
- PS-TS – PowerSTAR Temperature Sensor
- PS-EBM – External pushButton Module



MPPT SOLAR REGULATOR

Phone: +61 8 8245 6789

Fax: +61 8 8245 6788

Email: sales@roc-solid.com.au Web: www.roc-solid.com.au

Address: 37 Belford Avenue, Devon Park, SA, 5008, Australia